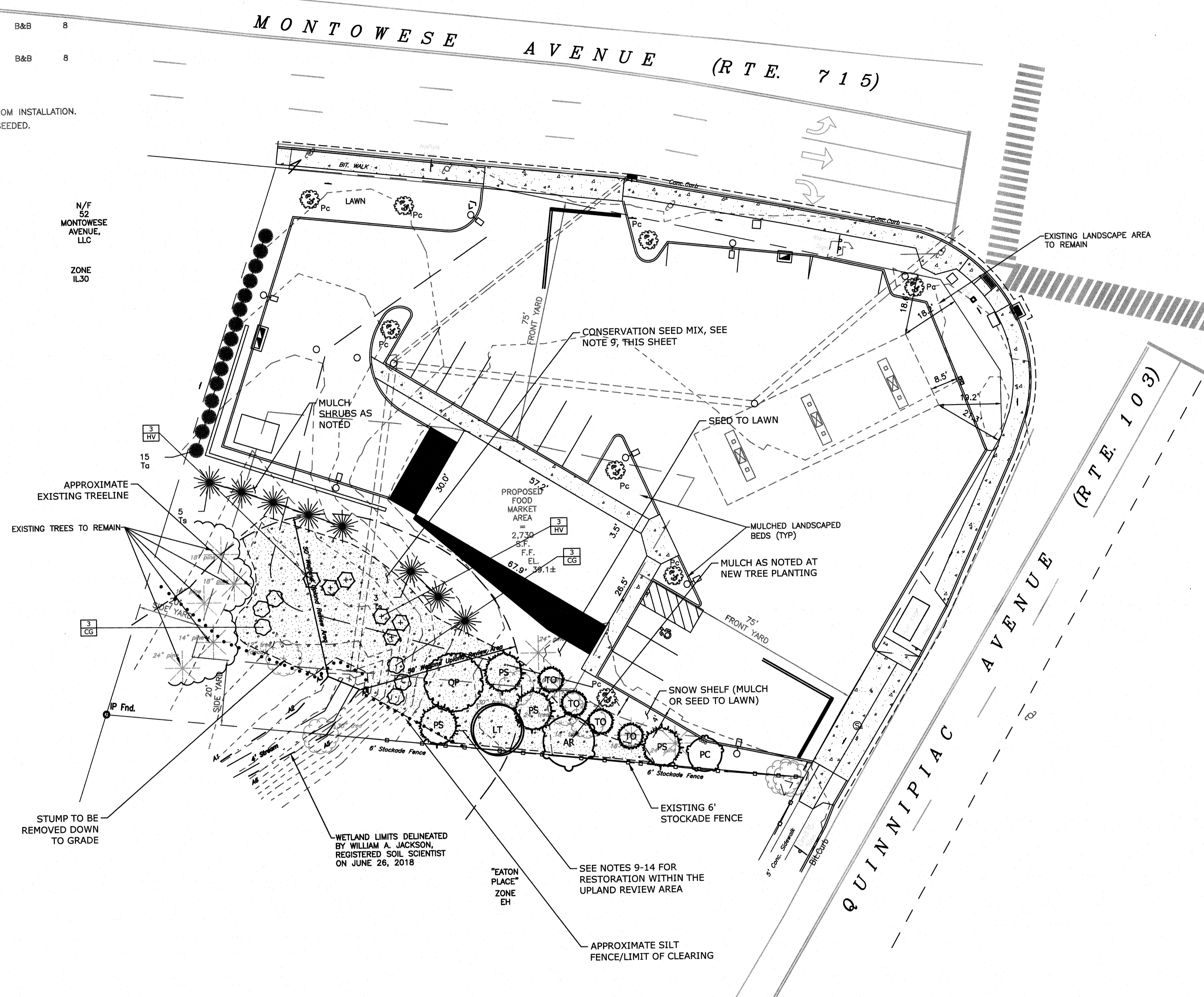


PLANT LIST (PREVIOUSLY APPROVED)

SYMBOL	COMMON NAME	LATIN NAME	SIZE	ROOT	QTY.
Ta	EMERALD ARBORVITAE	Thuja occidentalis "Emerald"	6'-7' HT.	B&B	15
Ts	GREEN GIANT ARBORVITAE	Thuja standishii "Green Giant"	6'-7' HT.	B&B	8
Pc	CHANTICLEER PEAR	Pyrus calleryana "Chanticleer"	2" CAL. DBH	B&B	8

LANDSCAPING NOTES:
 1. ALL LANDSCAPE MATERIAL SHALL BE GUARANTEED FOR A PERIOD OF ONE YEAR FROM INSTALLATION.
 2. ALL DISTURBED AREAS SHALL BE FINISHED WITH A MINIMUM OF 6" TOPSOIL AND SEEDED.



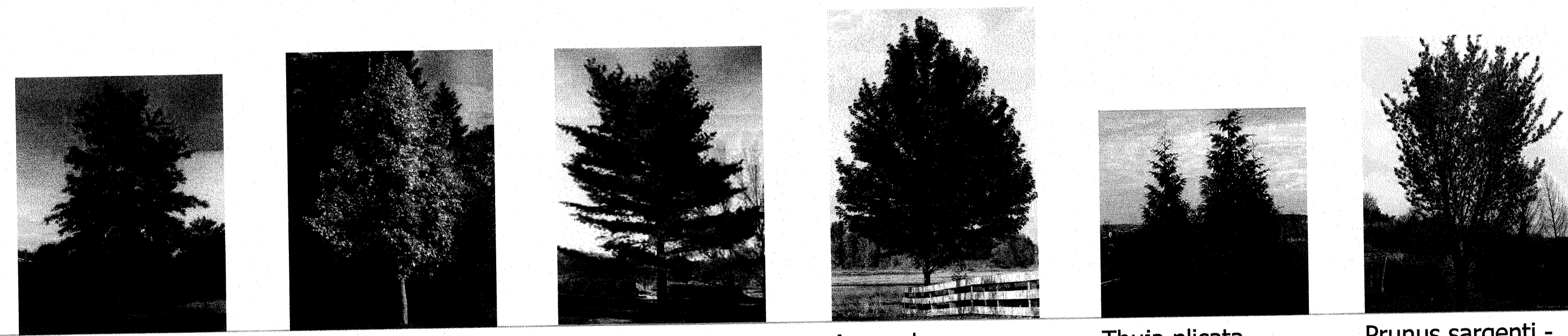
PLANTING NOTES

- THE CONTRACTOR SHALL VERIFY THE LOCATION OF ALL UNDERGROUND UTILITIES PRIOR TO EXCAVATING PLANT PITS.
- THE LANDSCAPE CONTRACTOR SHALL PROVIDE A 6" MINIMUM DEPTH OF TOPSOIL FOR ALL LAWN AREAS. WATER AS NECESSARY TO ESTABLISH TURF.
- ALL TREE AND SHRUB PLANTING BEDS SHALL HAVE 12" MINIMUM DEPTH OF TOPSOIL.
- THE LANDSCAPE CONTRACTOR SHALL PROVIDE A 4" MIN. DEPTH OF NATURAL NON-DYED SHREDED MULCH OVER ALL PLANTING BEDS AND TREE PLANTINGS. TREE PLANTINGS SHALL RECEIVE A MINIMUM 4' DIAMETER MULCH RING.
- PLANT SPECIES MAY BE ADJUSTED BASED ON AVAILABILITY AT TIME OF PLANTING. ALL PLANT MATERIAL SUBSTITUTIONS ARE SUBJECT TO REVIEW AND APPROVAL BY THE LANDSCAPE ARCHITECT.
- ALL PLANT MATERIALS SHALL CARRY A FULL GUARANTEE FOR A PERIOD OF ONE YEAR FROM THE DATE OF ACCEPTANCE, TO INCLUDE PROMPT TREATMENT OR REMOVAL AND REPLACEMENT OF ANY PLANTS FOUND TO BE IN AN UNHEALTHY CONDITION BY THE LANDSCAPE ARCHITECT. ALL REPLACEMENTS SHALL BE OF THE SAME KIND AND SIZE OF PLANTS SPECIFIED IN THE PLANT LIST.
- MAINTENANCE SHALL BEGIN IMMEDIATELY AFTER PLANTING AND SHALL INCLUDE WATERING, MULCHING, REPLACEMENT OF SICK OR DEAD PLANTS, RESETTling PLANTS TO PROPER GRADE OR UPRIGHT (PLUMB) POSITION, RESTORATION OF SAUCERS, AND ALL OTHER CARE NEEDED FOR PROPER GROWTH OF THE PLANTS.
- WHERE A SIZE RANGE IS SPECIFIED AT LEAST 50% OF PLANTS PROVIDED SHALL BE OF THE LARGER SIZE.
- APPLY SPECIFIED SEED MIX AT THE RECOMMENDED RATE THROUGHOUT THE DISTURBED UPLAND REVIEW AREA AND AS SHOWN ON THE PLAN. THE CONTRACTOR SHALL CLEAR THE AREA OF WEEDS, STONES LARGER THAN 1 INCH, ROOTS, AND DEBRIS PRIOR TO APPLICATION. LIMITS SHOWN ON PLAN ARE APPROXIMATE AND SHALL BE VERIFIED IN THE FIELD BY THE LANDSCAPE CONTRACTOR. ALL OTHER DISTURBED AREAS SHALL RE SEEDED TO LAWN.
- APPLY ORGANIC MATTER AND INCORPORATE THOROUGHLY INTO THE TOP 6 INCHES OF SOIL.
- CONTRACTOR/OWNER SHALL REMOVE AND DISPOSE OF ALL UNCLEAN FILL MATERIAL WITHIN THE DISTURBED UPLAND REVIEW AREA.
- REMOVE REMAINING STUMPS FROM FELLED TREES WITHIN UPLAND REVIEW AREA AND RESTORE AREA TO GRADE.
- GRADES WITHIN THE UPLAND REVIEW AREA SHALL BE RESTORED TO PREVIOUSLY EXISTING CONDITIONS.
- ALL SEDIMENT AND EROSION CONTROLS SHALL REMAIN IN PLACE AND BE MAINTAINED UNTIL THE SURROUNDING SLOPES ARE STABILIZED WITH NEW VEGETATION.

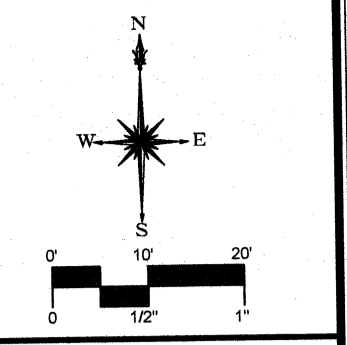
PLANT SCHEDULE - SUPPLEMENTAL PLANTINGS

TREES	QTY	BOTANICAL NAME	COMMON NAME	SIZE	CONT.
AR	1	Acer rubrum	Red Maple	2.5"-3" CAL.	B & B
LT	1	Liriodendron tulipifera	Tulip Tree	2.5"-3" CAL.	B & B
PS	4	Pinus strobus	White Pine	2.5"-3" CAL.	B & B
PC	1	Prunus sargentii 'Columnaris'	Columnar Sargent Cherry	2.5"-3" CAL.	B & B
QP	1	Quercus palustris	Pin Oak	2.5"-3" CAL.	B & B
TO	4	Thuja occidentalis 'Green Giant'	Green Giant Arborvitae	8'/10' HT.	B & B
SHRUBS	QTY	BOTANICAL NAME	COMMON NAME	SIZE	CONT.
CG	6	Cornus racemosa	Gray Dogwood	#3	
HV	6	Hamamelis virginiana	Common Witch Hazel	#3	

SEED MIX - UPLAND REVIEW AREA
 NEW ENGLAND CONSERVATION/WILDLIFE SEED MIX 3,300 sf
 Seed Rate: 1lb/1,750 SF (25 lbs/acre)



Quercus palustris - Pin Oak Liriodendron tulipifera - Tulip Tree Pinus strobus - White Pine Acer rubrum - Red Maple Thuja plicata - Green Giant Arborvitae Prunus sargentii - Flowering Cherry



MILONE & MACBROOM
 99 BEAULY DRIVE
 SUITE 200
 NORTH HAVEN, CT 06460
 WWW.MMNC.COM

REVISIONS	DATE	BY	DESCRIPTION
1	7/24/2020	SRS	REVISED PER COMMENTS

SUPPLEMENTAL LANDSCAPE PLAN
 SAMS FOOD STORES
 224 QUINNIAC AVENUE
 NORTH HAVEN, CONNECTICUT

SRS	SRS	MTD
DESIGNED	DRAWN	CHECKED
SCALE: 1"=20'		
DATE: JUNE 30, 2020		
PROJECT NO: 7250-01		
SHEET NO: 1 OF 1		
TOWN OF NORTH HAVEN LAND USE AND DEVELOPMENT JUL 27 2020 #P 18-31		
1 OF 1		